



# ASX Announcement

16 January 2015

## COMPANY DETAILS

**ABN:** 62 147 346 334

### **PRINCIPAL REGISTERED OFFICE**

Potash West NL  
Suite 3  
23 Belgravia Street  
Belmont WA 6104

### **POSTAL ADDRESS**

PO Box 588  
Belmont WA 6984

**W** [www.potashwest.com.au](http://www.potashwest.com.au)

**E** [info@potashwest.com.au](mailto:info@potashwest.com.au)

**P** +61 8 9479 5386

**F** +61 8 9475 0847

### **ASX CODE**

PWN

### **OTC PINK CODE**

PWNNY

### **CORPORATE INFORMATION**

(16 January 2015)

200M Ordinary shares  
36M Partly paid shares  
5M Unlisted options  
8M Listed options

### **BOARD OF DIRECTORS**

**Adrian Griffin**  
(Non-Executive Chairman)  
**Patrick McManus**  
(Managing Director)  
**Chew Wan Chuen**  
(Non-Executive Director)  
**Gary Johnson**  
(Non-Executive Director)

## **EAST EXPLORATION GRANTED EXPLORATION LICENCES IN THURINGIA, CENTRAL GERMANY**

- **450 sq km of exploration permits granted**
- **Extensive drilling and other exploration data available**
- **Historical mines on the Kuellstedt Licence**
- **Collation, review and assessment of historical data in progress**
- **Licences close to existing operations and high quality infrastructure**

Potash West (the **Company**) (ASX: **PWN**) is pleased to announce that the licences applied for by East Exploration GmbH (**EEG**), have been granted by the Thuringian Mining Authority.

**PWN** is earning 55% of East Exploration Pty Ltd, which owns 100% of **EEG**

**EEG** is working with ERCOSPLAN Ingenieurgesellschaft Geotechnik und Bergbau mbH (ERCOSPLAN) to identify areas that have strong potential to contain significant potash mineralization. ERCOSPLAN are a leading global potash consultancy based in Erfurt, Germany. It employs about 200 people globally and has consulted on the development of many large potash projects worldwide. **EEG** submitted exploration licence applications for two identified areas in July 2014. Both areas are located within the South Harz Potash District where there has been continuous potash fertilizer production for a period of more than 100 years

Managing Director Patrick McManus said “Granting of these licences is an important milestone in the project to develop a new mine in this historic mining region. There is a vast amount of information available from the over 30 holes drilled on Kuellstedt and in close proximity to it. Evaluation of this data is in progress. This evaluation is being carried out by our consultant, ERCOSPLAN, who have a long standing association with potash mining in the region and their experience will inform the next stage of exploration. We are looking forward to the results of the review, expected within the next six weeks”.

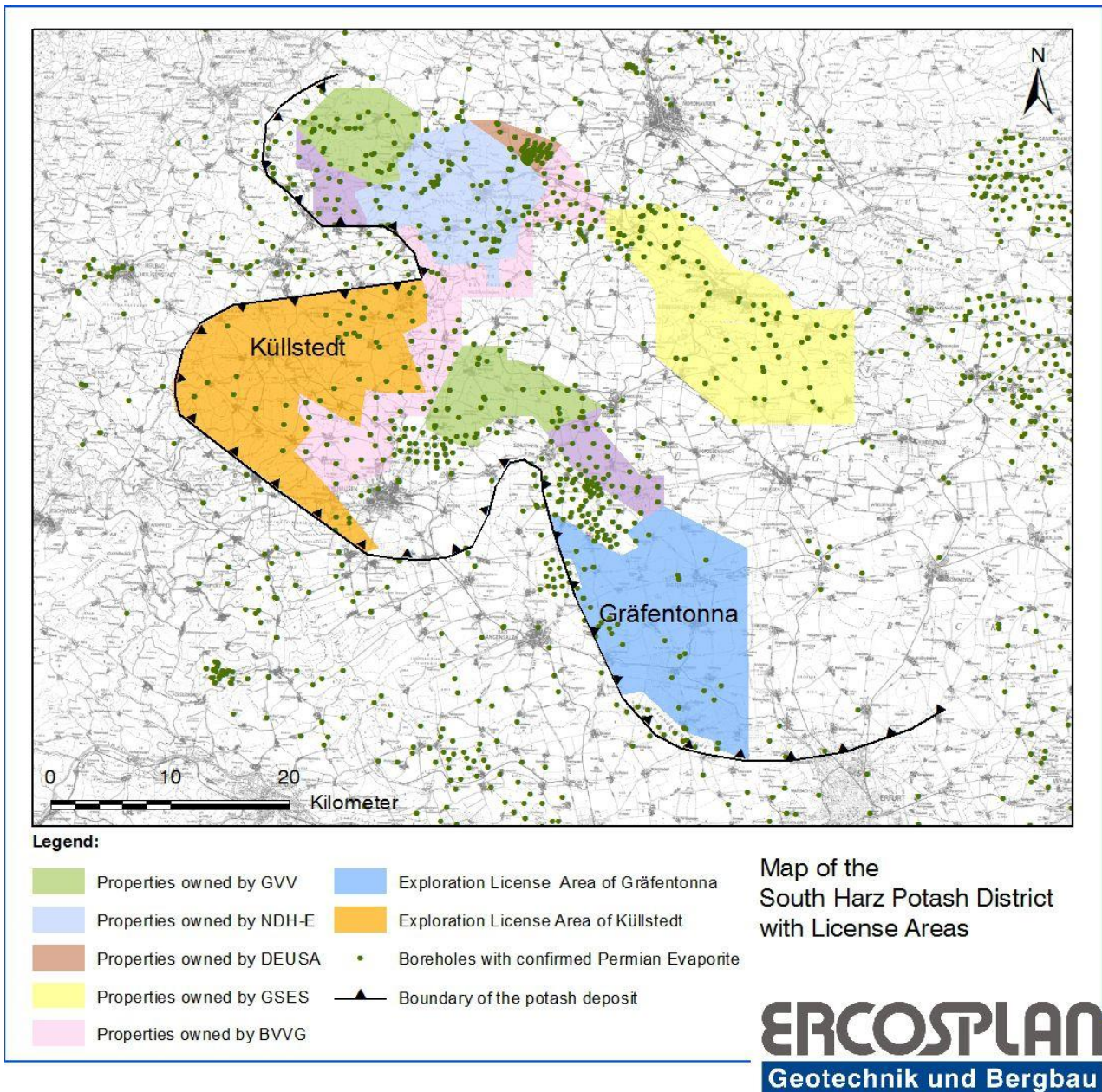
**INTRODUCTION**

Potash West NL is earning 55% of East Exploration Pty Ltd, by funding applications and exploration on licences, Kuellstedt and Graefentonna, in the South Harz region of Thuringia, Central Germany (see Figure 1). The project has unique advantages in excellent connectivity to transport facilities, infrastructure and proximity to local markets.



**Figure 1 EEG Project location**

**EEG** submitted licence applications in early July 2014. As part of the approval procedure a public consultation process was carried out. It is encouraging that there were several submissions recognizing the long tradition of potash mining in the South Harz region. **EEG** has been granted two licences, Kuellstedt and Graeffentonna, covering approximately 450 sq.km (see Figure 2). The Licence terms are five years, with the option to renew for a further three years.



**Figure 2: South Harz Projects**

**NEXT STEPS**

EEG has commenced work with our consultants ERCOSPLAN reviewing the very large amount of geological data that is available relating to the Kuellstedt exploration licence, which is our first priority. The data is owned by a range of private and government groups and relates to work carried out over several decades in this region, which has a history of potash mining going back over 100 years. The outcome from this work is likely to be an appraisal of the potential for potash mineralization, likely depths, thickness's, mineralization and grades, reported in a manner that is consistent with JORC reporting practices. It is expected that this work will be completed in six weeks

For further information contact:

Potash West NL  
Patrick McManus  
Managing Director  
Tel: +61 (08) 9479 5386  
info@potashwest.com.au  
Web: www.potashwest.com.au

Media:

Professional Public Relations  
Colin Hay  
Tel: +61 (08) 9388 0944

### ***About Potash West***

*Potash West (ASX:PWN) is an exploration company focused on developing phosphate and potassium-rich greensand deposits in West Australia's Perth Basin. The Company aims to define a substantial resource base and investigate how best to recover potash from the mineral. The project is well situated in relation to infrastructure, with close access to rail, power and gas. A successful commercial outcome will allow the Company to become a major contributor to the fertiliser market at a time of heightened demand.*

*The Company has a major land holding over one of the world's largest known glauconite deposits, with exploration licenses and applications covering an area of more than 2,600km<sup>2</sup>. Previous exploration indicates glauconite sediments are widespread for more than 150km along strike and 30km in width.*